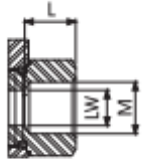
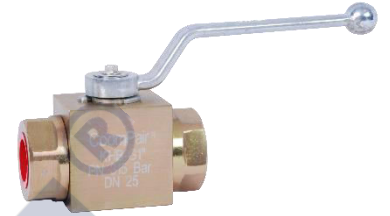
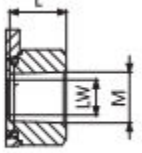


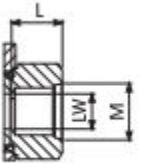
MODEL KHB



DIN ISO 228



ANSI/ASME B1.20.1



SAE J1926-1

Özellikler

- Tip : İki Yollu Küresel vana
- Gövde : Blok (yekpare)
- Materyal : 1,0737
- Küre sitleri : DN4 den DN25 kadar
- O-Rings : NBR , FKM , EPDM , MVQ
- Çalışma Basıncı : 500 bar , vana ebatına ve seçilen sızdırmaz materyale bağlı .
- Sıcaklık aralığı : - 10 ° C + 100 ° C , seçilen sızdırmaz materyaline bağlı .

Specifications

- Type : Ball valve 2 ways
- Body : Block
- Material : 1,0737
- Ball seats : From DN4 to DN25
- O-Rings : NBR , FKM , EPDM , MVQ
- Operating pressure : 500 bar depending on valve size and seal materials selected .
- Temperature range : -10 ° C + 100 ° C depending on seal material selected .

SİPARİŞ KODU:	ÖLÇÜ	A	B	C	D	H	L	I	F	G	CH	LW	SW	Ağırlık Weight(Kg)
KHB- 1/4"	1/4"	35	14,5	71	42,4	110	15,5	91,5	49	30	24	6	9	0,497
KHB- 3/8"	3/8"	40	17,4	73	44,4	110	15,5	96,5	54,25	35	30	10	9	0,652
KHB- 1/2"	1/2"	43	18	83	48,4	110	17	99,5	57	37	32	13	9	0,77
KHB- 3/4"	3/4"	55	23,4	95	62,5	180	21	106,5	73,5	45	41	20	14	1,46
KHB- 1"	1"	65	29,5	112	66,5	180	24	116,5	83,5	55	50	25	14	2,23
KHB- 1 1/4"	1X1/4"	65	29,5	120	66,5	180	24	116,5	83,5	55	55	25	14	2,299
KHB-1 1/2"	1X1/2"	65	29,5	124	66,5	180	24	116,5	83,5	55	60	25	14	2,413

Önemli not : Bu ürün grubu gazda kullanılmaz.

Note : These products are not used in gas.

PNÖSAN San ve Tic. Ltd. Şti.

Merkez : Cemaliye Mah.Gazi Çeşme Sok.No:2/A 59860 Çorlu / TEKİRDAĞ Tel:(+90 282) 652 94 86 Pbx Fax:(+90 282) 652 74 05

Fabrika : Zafer Mah.Şehit Yzb.Yücel Kenter Cad. Blok 7 No:1-2-3 Çorlu/Tekirdağ

www.pnosan.com / bilgi@pnosan.com / satis@pnosan.com